
 doppio senso

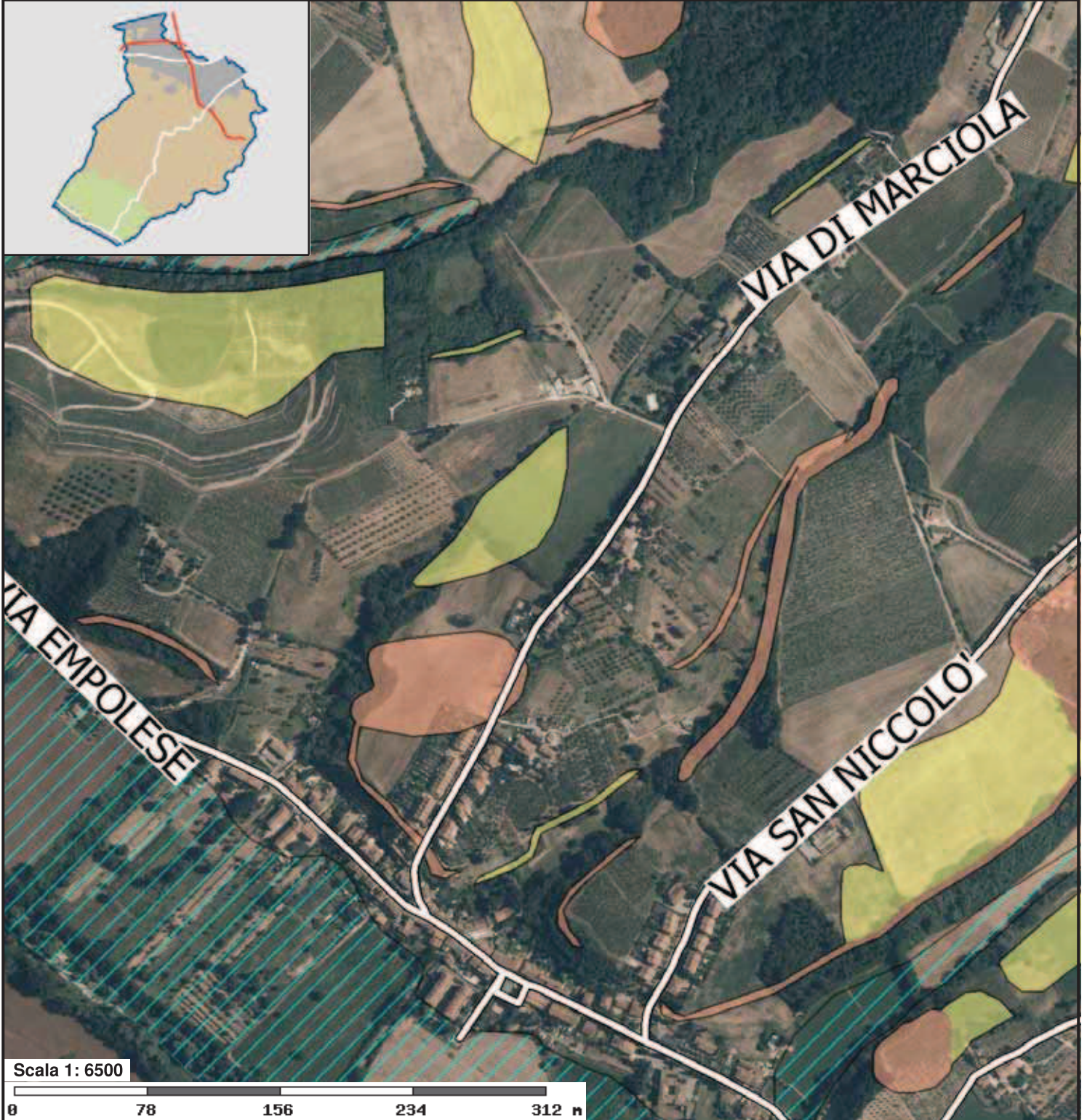
 senso unico

 senso unico

Cartografia

Ortofoto

Comune di Scandicci - Consultazione cartografica





Scala 1 : 6500

0 78 156 234 312 m

Livello D03


Pericolosità geologica

 Pericol. geologica medio-bassa - G2a

 Aree apparentemente stabili con presenza di fenomeni franosi inattivi stabilizzati

 Pericol. geologica elevata G3

 Pericol. geologica media - G2


 Corpi detritici su versanti inferiori a 25%


 Pericol. geologica molto elevata G4

Toponomastica

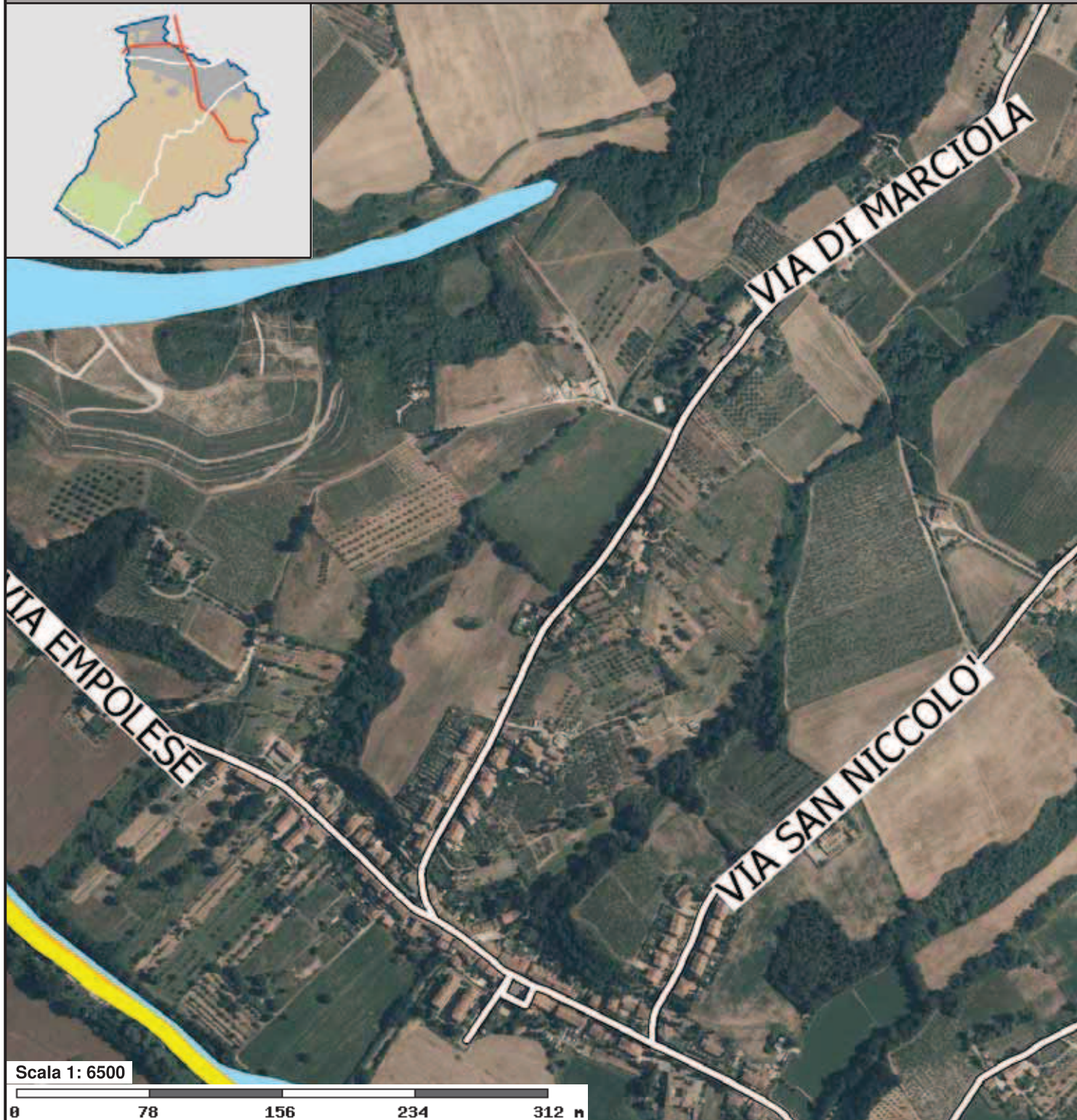
Asi stradali

 doppio senso

 senso unico

 senso unico

Comune di Scandicci - Consultazione cartografica



Livello D04

 Aree per opere di regimazione idraulica del T. Vingone

 Aree classificate in I4 suscettibili di riclassificazione in I3

Pericol. idraulica

 bassa


 elevata

 media


 molto elevata

Toponomastica

Assi stradali

 doppio senso

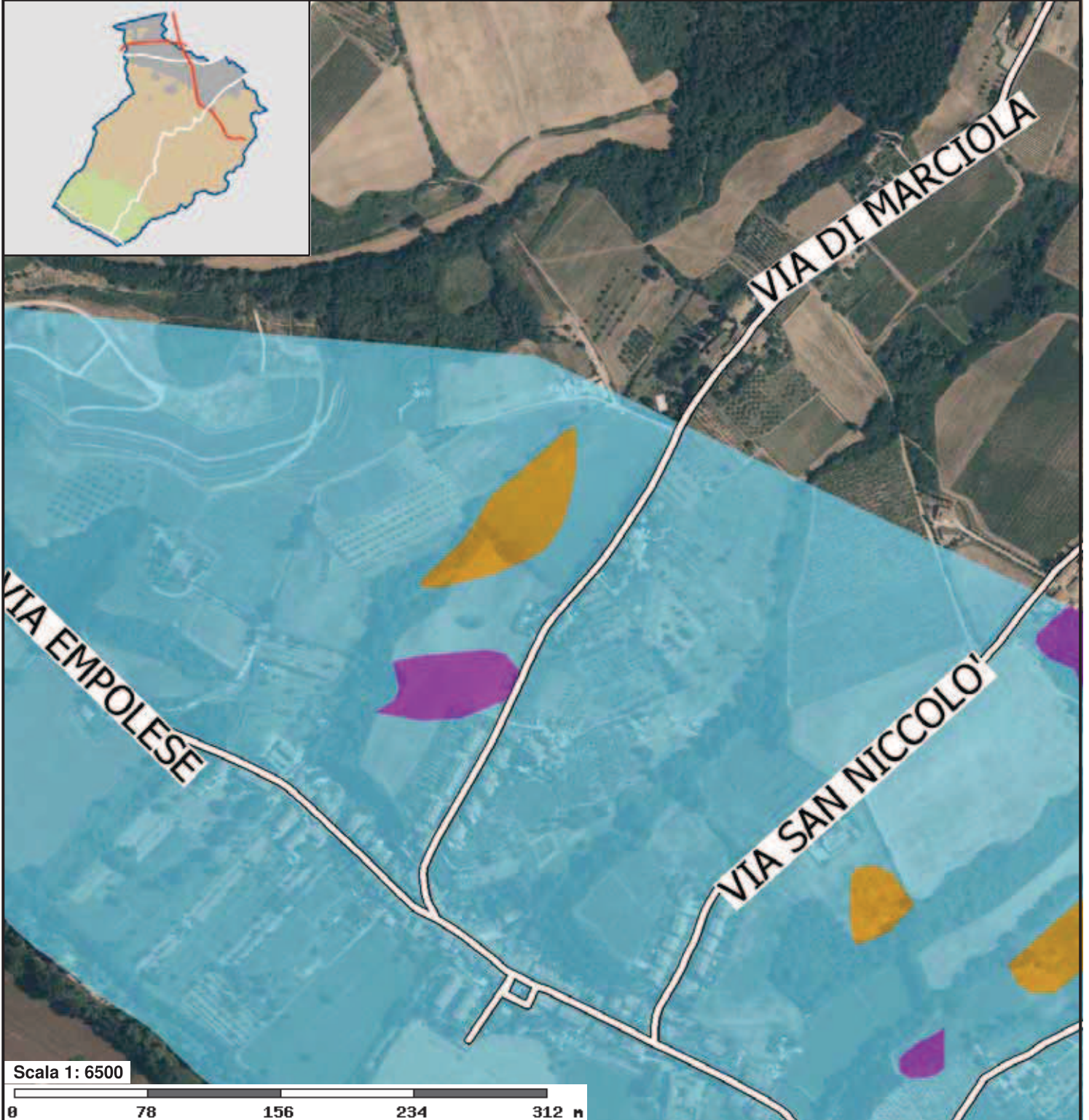
 senso unico

 senso unico

Cartografia

Ortofoto

Comune di Scandicci - Consultazione cartografica



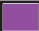




Scala 1: 6500

0 78 156 234 312 m

Livello D05

Pericolosità sismica

-  S1-Pericol. sismica locale bassa
-  Area di applicazione delle prescrizioni
-  S4-Pericol. sismica locale molto elevata

-  S2-Pericol. sismica locale media
-  S3-Pericol. sismica elevata

Toponomastica

Asi stradali

-  doppio senso
-  senso unico
-  senso unico